



IEEE
young
professionals™

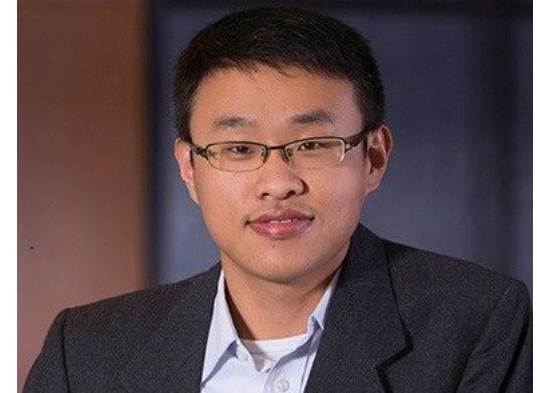
Focus Presentation

Jian (Jay) Guo

Young Professionals Section Chair Nomination and Plan to Run

Self-Intro

- Jian (Jay) Guo, PhD in IE area
 - Prognostics modeling
 - Bayesian reliability
- Western New England University
- Working for Lam Research as a Reliability Engineer



Road-Trip



Portland



WNE
WESTERN NEW ENGLAND
UNIVERSITY

47 h
3,105 miles

46 h
3,035 miles

44 h
3,003 miles

Springfield

Google

Gulf of Mexico

What I am doing here today...

- Nomination for IEEE Young Professionals Section Chair
- Plan to run



IEEE Young Professionals



- Types of IEEE Affinity Groups
 - **Young Professionals**
 - IEEE Women in Engineering
 - IEEE Life Members
 - IEEE USA Consultants Network
- IEEE Young Professionals program exists to specifically serve young members

IEEE Young Professionals

- IEEE Young Professionals (YP) program is the group of IEEE members and volunteers who have graduated from their first professional degree within the past 15 years.
- Any IEEE member who has graduated from their first degree of education in past 15 years is automatically included to be a part of the IEEE Young Professionals, **free of charge**



IEEE Young Professionals

- IEEE YP is an international community
 - IEEE YP members are interested in elevating their professional image, expanding their global network, connecting with peers locally and giving back to their community.
- IEEE YP is highly diverse
 - IEEE YP encompasses all members from recent university graduates to experienced professionals and entrepreneurs,

IEEE Young Professionals- Chair

- IEEE Young Professionals (YP) Chair - It would help coordinate pub nights, interface with local student branches, and more!
- I am willing to serve as this role...



More...

What I have done...

- Participated IEEE reliability Boston section workshop and meetings.
- Contributed as technical committee/session chair of IEEE flag conferences in reliability, such as RAMS, IEEE PHM, and IEEE ASTR.
- Served as vice president/treasure in ASEM Western New England University Chapter
- Completed VOLT Track 1 training and applying the Track 2 training.
- **I am "New", but I want to get involved with good passion and motivation**

Plan to Run

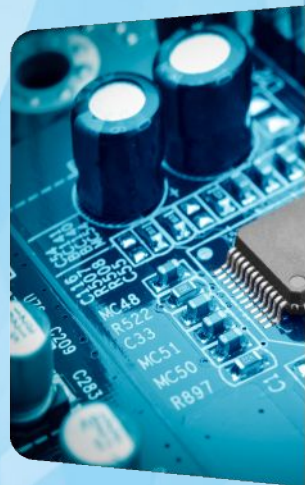
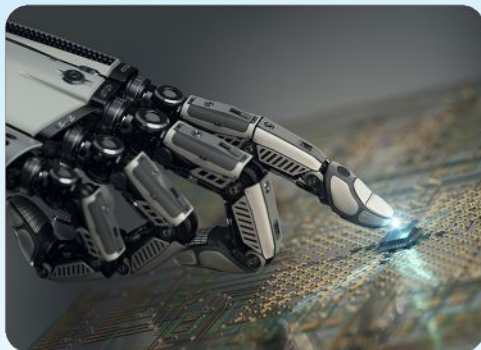
- Pub night coordination
- Interface with local student branches
- Ideas of events:
 - Plenary sessions (entrepreneurs, engineers, technicians, etc.)
 - Workshops (working style, team building, self-motivation)
 - Lectures (AI, data analytics, robotics, mechanical design)
 - Industry tours (local companies)
- Social Media Plan
 - Platforms: LinkedIn, Facebook, Twitter, and even Instagram

At the end...

- Special thanks go to Dr. And Paulo Vasconcelos
- Thanks all committee members of IEEE Oregon Section
- Members and student volunteers

References

- MGA YP Affinity Group Manual
- Society YP Representative Guidebook
- Social Media Strategy
- Event Ideas
- Audience Development Toolkit
- GOLD Leadership Reference



Backup Slides

Bio, photo, and position statement

Biography

- Jian “Jay” Guo joined Lam Research in 2018 as a reliability engineer. He received his Ph.D. in Industry Engineering and Engineering Management from Western New England University, Springfield, MA, in 2018. With focuses on Bayesian reliability and prognostics modeling, he has published 4 major journal papers and several conference papers/presentations. Jay also has a diverse education background. Before his Ph.D., Jay received his bachelor and master degree in supply chain management. As an active IEEE member, Jay frequently participates IEEE reliability Boston section workshop and meetings. Besides, he contributes as technical committee/session chair of IEEE flag conferences in reliability, such as RAMS, IEEE PHM, and IEEE ASTR. In Lam Research, Jay is working on system reliability assessment with big data.

Photo



Position Statement

- As the chair of IEEE Young Professionals, I will implement the philosophy that IEEE Oregon
 - To get new members, we need active Student Branches.
 - To retain our members and in particular recently graduated students, with a low retention rate at the moment - we need active Sections with active YP section.
- As a chair, I will strive to create a good atmosphere in the section, committee, and the Oregon Section Operating Committee. Only in a good and friendly atmosphere can members flourish!
- I will stimulate a fruitful cooperation between all our organizational units and the many supporting committees in our Section.
- I will not constrain my contribution regarding my time.

Contact Information

- Email: jian.jay.guo@gmail.com
- Cell: 413-234-9735
- LinkedIn: <https://www.linkedin.com/in/jian-jay-guo-ph-d-9a063056/>
- Reference:
 - Dr. Zhaojun (Steven) Li, Assistant Professor, Western New England University
 - Dr. Thomas Keyser, Dean of College of Engineer, Oregon Institute of Technology
 - Dr. Sassan Roham, Senior Manager, Lam Research